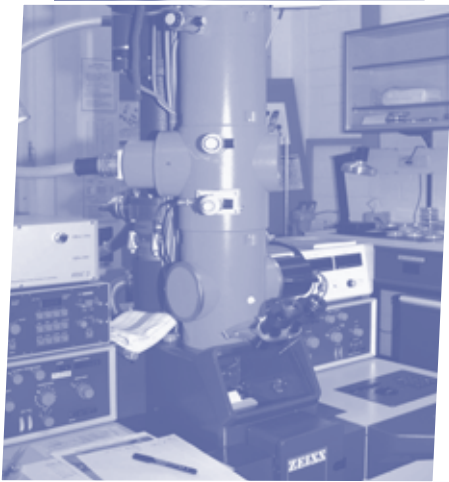




ROBERT KOCH INSTITUT



Consultant Laboratory for Diagnostic EM  
in Infectious Diseases and  
Arbeitskreis-EMED (DGE)

Glienicke Workshop 2006

# DIAGNOSTIC ELECTRON MICROSCOPY IN INFECTIOUS DISEASES

October 19 - 20, 2006

Robert Koch-Institut (RKI)  
Berlin, Germany

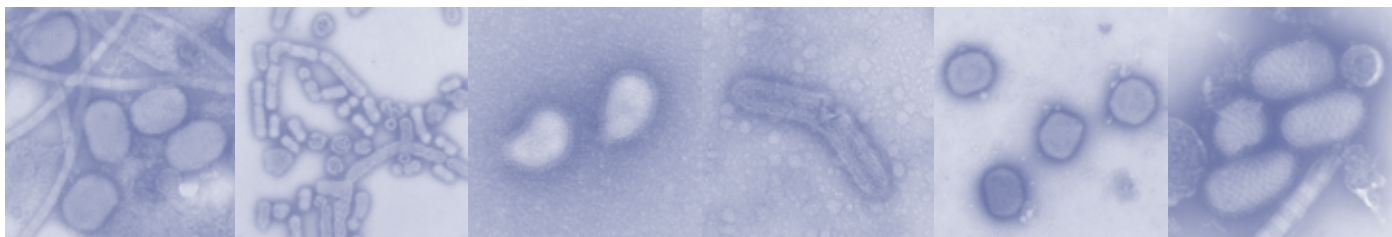


Deutsche Gesellschaft für Elektronenmikroskopie e.V.

Soft Imaging System   
An Olympus Company



**HITACHI**  
Inspire the Next



The biennial Glienicke Workshop is organized jointly by the Consultant Laboratory for Rapid Diagnostic EM in Infectious Diseases, which forms part of Department 4 of the Centre for Biological Safety (ZBS 4) at the Robert Koch Institute (RKI), and the Working Group for EM-Pathogen Diagnosis (AK-EMED), part of the German Society for Electron Microscopy. This year, due to ongoing reconstruction work at Glienicke Castle, the workshop will be held in the lecture hall of the RKI itself.

The Workshop will address recent progress in EM diagnostics and related fields as well as methodological advances. The first day will focus on the EM of new or emerging viruses and related methodologies, including information from companies concerning new technical developments in the field of microscopy. The second day will consist of case reports and further basic research. Regular presentations will be allotted 15 minutes plus 5 min for discussion and a number of plenary lectures (30 min) will provide overviews of selected topics. The presentation of additional short „free“ contributions, posters etc. is also encouraged.

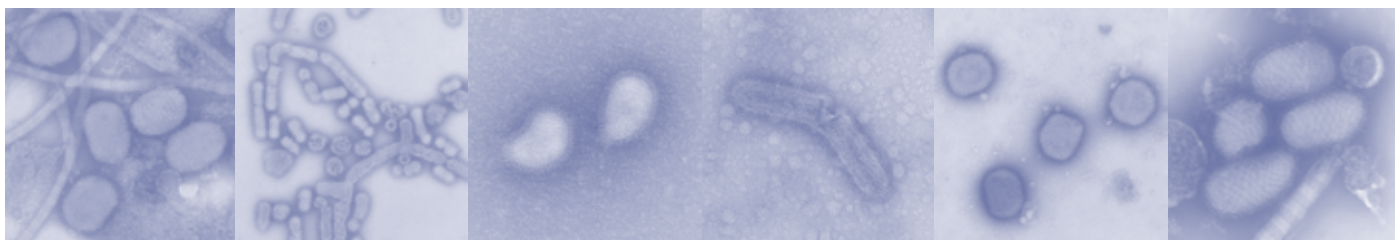
As the meeting is intended to provide a communication platform to promote networking activities, a congress dinner and a sightseeing boat tour on the River Spree will complement the scientific program. We hope to see you in Berlin.

Yours,

Norbert Bannert  
Hans Gelderblom  
Michael Laue

Registration fee	€ 50 (payable on the first meeting day)
Dinner on 19th Oct.	(included in the registration fee)
Boat tour	€ 10

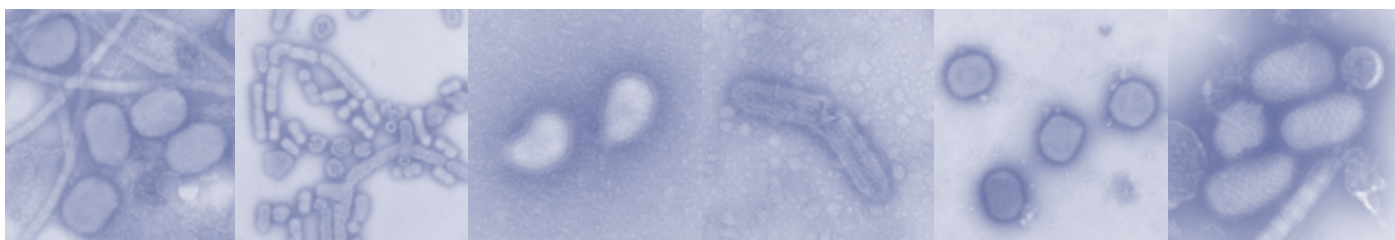
For registration please use the attached form.



## Draft Program Glienicke-Workshop 2006

Thursday, October 19, 2006

- 09.00-10.00 Registration
- 10.00-10.10 Welcome Address (RKI President/Head ZBS)
- 10.10-10.20 Opening Remarks (Norbert Bannert)
- Session 1  
*Chair: Hans Gelderblom*
- 10.20-10.50 Plenary Lecture I: Dick Madeley, Northumberland, UK  
*„Answers needed, and before we go home“ - coping with the unexpected*
- 10.50-11.20 Plenary Lecture II: Atanu Basu, NIV, Pune, India  
*EM diagnosis and emerging viral infections: India, the last decade and beyond*
- 11.20-11.40 Andreas Kurth, RKI, Berlin, Germany  
*Detection and characterization of unknown viruses in West African mosquitoes*
- 11.40-12.00 Hazel Appleton, HPA, London, UK  
*Electron Microscopy of some recently discovered human viruses*
- 12.00-12.20 Norbert Bannert, RKI, Berlin, Germany  
*Morphology and trans-species transmission of new “endogenous” retroviruses*
- 12.20-13.20 Lunch break



Thursday, October 19, 2006

Session 2

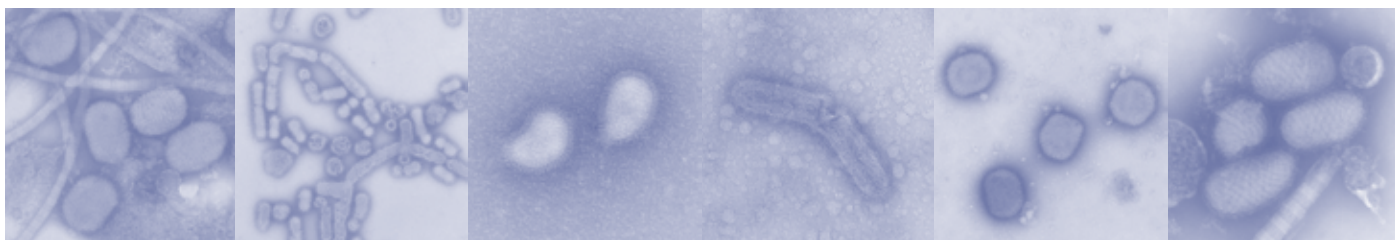
*Chair: Dick Madeley*

- 13.20-13.50 Plenary Lecture III: Charles Humphrey, CDC, Atlanta, USA  
*Electron Microscopy routines and oddities associated with infectious disease agent identification and control*
- 13.50-14.20 Plenary Lecture IV: Tao Hong, CDC, Beijing, China  
*The role of IEM in the discovery and identification of new emerging viruses*
- 14.20-14.40 Antonio Lavazza, IZSLER, Brescia, Italy  
*The use of convalescence sera in IEM for the detection of not suspected/new agents*
- 14.40-15.00 Coffee break

Session 3

*Chair: Alan Curry*

- 15.00-15.20 Jan Mast, CODA-CERVA, Brussels, Belgium  
*Phenotypical characterisation of mutant viruses on a per-particle-base by immunogold staining and transmission electron microscopy*
- 15.20-15.40 Roland Fleck, NIBSC, Hertfordshire, UK  
*Imaging and Biological Medicines - Production and Safety of Biological Medicines*
- 15.40-16.00 Christina Johnsen, SSI, Copenhagen, Denmark  
*Confirmation of electron microscopy results by direct testing of viruses adhered to grids using nucleic acid amplification techniques*
- 16.00-16.20 Michael Laue, RKI, Berlin, Germany  
*Rapid embedding and sectioning*
- 16.20-16.40 Cynthia Goldsmith, CDC, Atlanta, USA  
*Role of EM in the recognition of emerging pathogens and monitoring for the potential release of smallpox.*
- 16.40-17.00 Coffee break

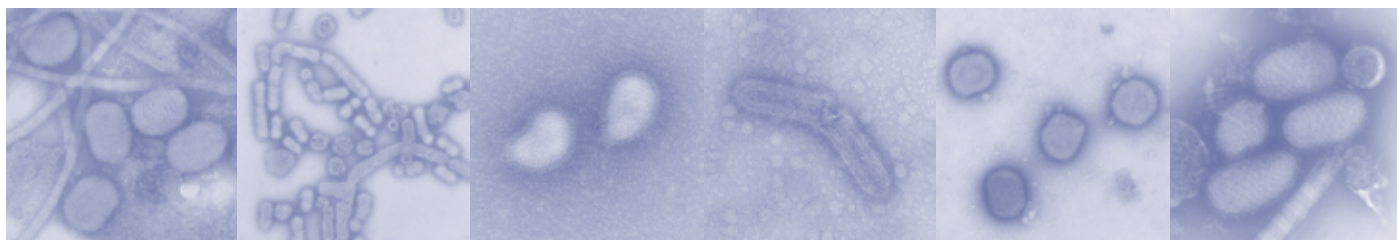


Thursday, October 19, 2006

Session 4

*Chair: Michael Laue*

- 17.00-17.20 Heiner Jaksch, ZEISS, Oberkochen, Germany  
*To stain or not to stain? New approaches in the virus diagnostics with the Gemini technology*
- 17.20-17.40 Wim Busing, FEI, Eindhoven, Netherlands  
*Latest developments and results of TEM in Life Sciences applications*
- 17.40-18.00 M. Rodewald, JEOL, Eching, Germany  
*New developments for Electron Microscopy in Life Science from JEOL*
- 18.00-18.20 Jens Krieger, OLYMPUS SOFT IMAGING SOLUTIONS, Münster, Germany  
*New applications for digital diagnostic electron microscopy and their implications*
- 18.20-18.40 Michael Capers, Hitachi High-Technologies Europe, Krefeld, Germany  
*Newly developed automatic specimen search function for TEM viral diagnostics*
- 18.40-18.50 Michael Laue, RKI, Berlin, Germany  
*Networking initiatives*
- 18.50 End of the scientific program of the first day
- 19.30 Dinner



Friday, October 20, 2006

Session 5

*Chair: Sara Miller*

9.00-9.30 Plenary Lecture V: Paul Hazelton, Univ. Manitoba, Winnipeg, Canada  
*Concentration methods in diagnostic virology*

9.30-10.00 Plenary Lecture VI: Alex Hyatt, AAHL, CSIRO, Geelong, Australia  
*A busy time in emerging diseases: The continued role for diagnostic and consultative electron microscopy*

10.00-10.20 Alan Curry, HPA, Manchester, UK  
*Detection of the parasitic protozoan *Isoospora belli* in an AIDS patient*

10.20-10.40 Coffee break

Session 6

*Chair: Bärbel Hauröder*

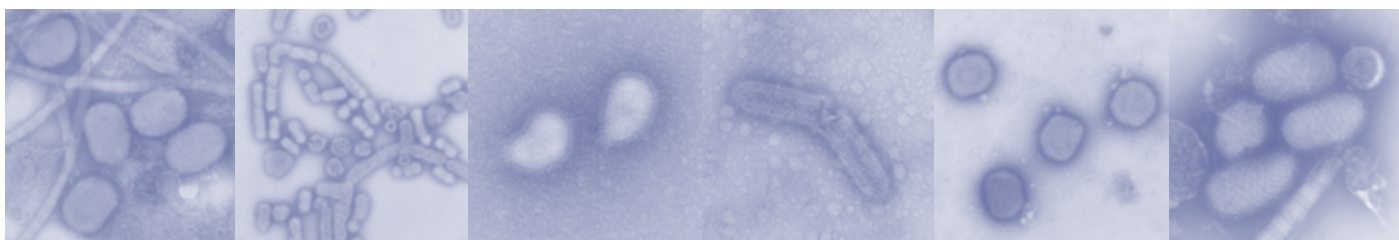
10.40-11.00 Barry Dowsett, HPA, Porton Down, UK  
*A nosocomial poxvirus outbreak in Pakistan*

11.00-11.20 Larissa Kolesnikova, RKI, Berlin, Germany  
*Budding of Marburgvirus*

11.20-11.40 Ilya Vinogradov, Vector, Koltsovo, Russia  
*Differential diagnostics of poxvirus infections by microscopic methods*

11.40-12.00 Guisy Cardeti, IZSLER, Rome, Italy  
*Diagnostic EM in viral diagnosis of bees disease*

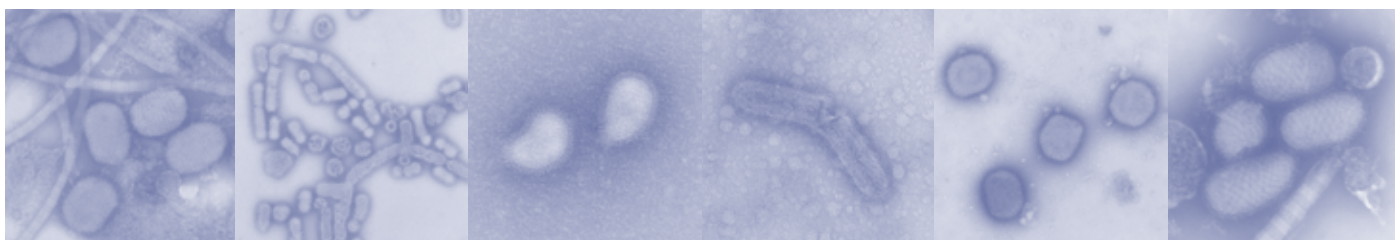
12.00-12.40 Lunch break



Friday, October 20, 2006

Session 7  
Chair: Alex Hyatt

- 12.40-13.10 Plenary Lecture VII: Sara Miller, Duke Univ., Durham, USA  
*Making lemonade from lemons and other special techniques in Electron Microscopy*
- 13.10-13.40 Plenary Lecture VIII: Hans R. Gelderblom, RKI, Berlin, Germany  
*Rapid diagnostic EM in infectious diseases: Update 2006, summary of the workshop and perspectives*
- 13.40-13.50 Bärbel Hauröder, ZiSanDi, Koblenz, Germany/Josef Schröder, Univ. Regensburg, Regensburg, Germany  
*"UltraPath 2006: Report of the highlights"*
- 13.50-14.15 Norbert Bannert, RKI, Berlin, Germany  
*Discussion of the EQA-19 results, concluding remarks*
- 14.15 End of the Workshop
- 15.00 Boat tour on the Spree river
- 18.00 Fare-well



## Hotels near RKI

Gästehaus Axel Springer  
 Föhler Str. 14  
 13353 Berlin  
 Tel.:++49(0) 030 / 45 00 60 Fax:++49(0)30 45006146  
 E-mail: [gaestehaus@dhzb.de](mailto:gaestehaus@dhzb.de)  
<http://www.dhzb.de/metapages/startpage/>  
 Single Room: € 80,00 Double Room: € 110,00  
 Very close to the Institute

Ibis Berlin Reinickendorf  
 Alt-Reinickendorf 4-5  
 13407 Berlin  
 Tel.:++49 (0)30 / 49 88 30  
[http://www.ibishotel.com/ibis/fichehotel/gb/ibi/1573/fiche\\_hotel.shtml](http://www.ibishotel.com/ibis/fichehotel/gb/ibi/1573/fiche_hotel.shtml)  
 Single Room: € 69,00

Hotel Holiday Inn Berlin-Mitte  
 Hochstr. 2-3  
 13357 Berlin-Mitte,  
 ++49 (0)30 4600 30  
<http://www.hiberlin.de/en/startseite.html>  
 Email: [info@hiberlin.de](mailto:info@hiberlin.de)

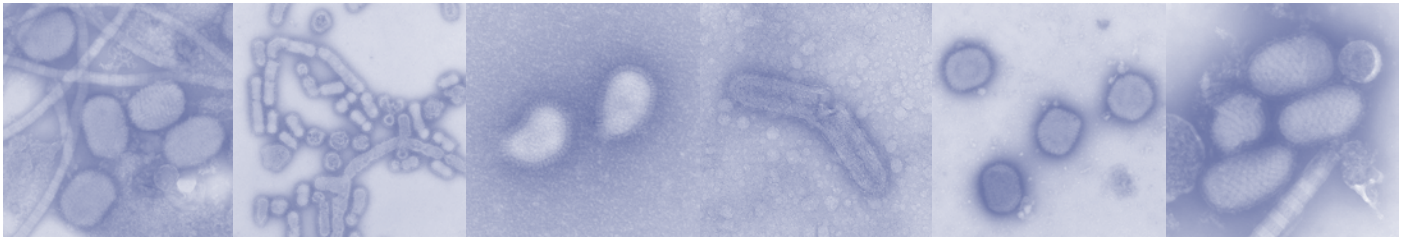
Hotelpension Rehberge  
 Ofener Str. 15  
 13349 Berlin  
 Tel.:++49 (0) 30 / 45 20 873 Fax ++49 (0)30 45 19 94 65  
<http://www.hotelpension-rehberge.de/>  
 E-mail: [info@hotelpension-rehberge.de](mailto:info@hotelpension-rehberge.de)

Arcos Hotel and Appartments  
 Genter Str. 53 A/B  
 13353 Berlin  
 Tel.:++49 (0) 30 / 45 48 64 54 Fax ++49 (0) 30 / 45 48 61 23  
<http://www.arcos-berlin.de/index.php>  
 E-mail: [arcos@arcos-berlin.de](mailto:arcos@arcos-berlin.de)

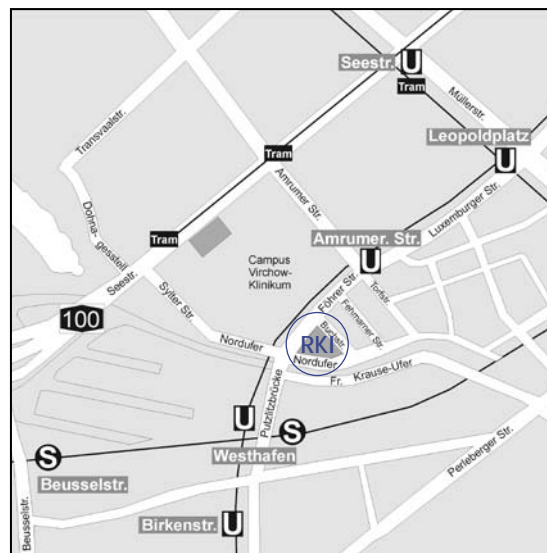
Hotel Hansablick  
 Flotowstr. 6  
 10555 Berlin-Tiergarten  
 Tel: ++49(0)30-39 04 80-0 Fax++49 (0)30-392 69 37  
<http://www.hansablick.de/>  
 E-mail: [reserv@hotel-hansablick.de](mailto:reserv@hotel-hansablick.de)

For more information regarding an accomodation, please contact Freya Kaulbars  
 at [KaulbarsF@rki.de](mailto:KaulbarsF@rki.de)





## How to reach the RKI



Meeting Location:  
 Lecture Hall of the Robert Koch-Institut  
 Nordufer 20  
 13353 Berlin  
 Germany  
 Phone: +49-30-4547-2549

For more information contact Freya Kaulbars at  
[KaulbarsF@rki.de](mailto:KaulbarsF@rki.de)