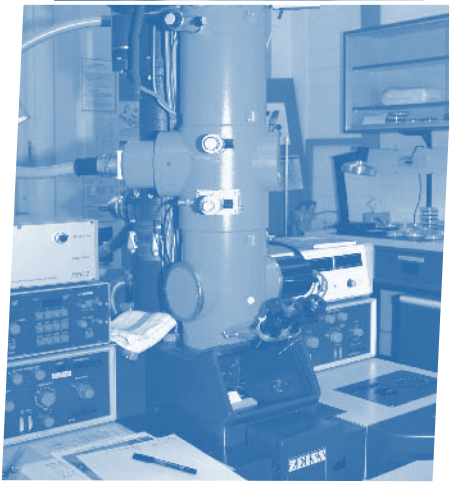




ROBERT KOCH INSTITUT



Consultant Laboratory for Diagnostic EM
in Infectious Diseases and
Arbeitskreis-EMED (DGE)



Glienicke Workshop 2008

ELECTRON MICROSCOPY IN INFECTIOUS DISEASES AND PATHOGEN RESEARCH



November 6 - 7, 2008

Robert Koch Institute (RKI)
Berlin, Germany



Deutsche Gesellschaft für Elektronenmikroskopie e.V.

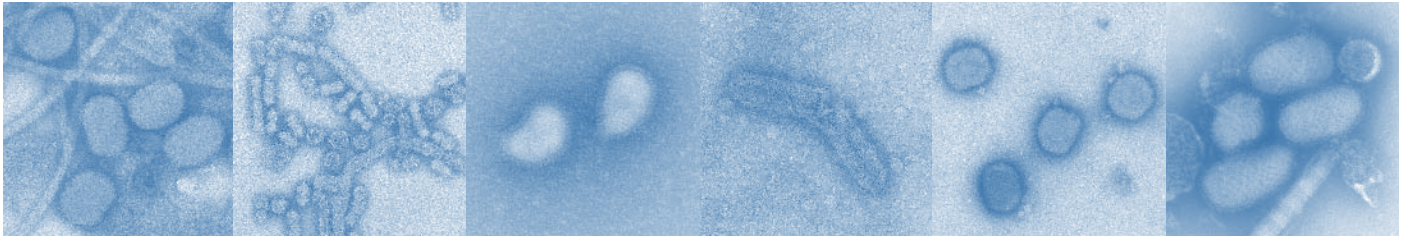
Soft Imaging System 
An Olympus Company



 **FEI COMPANY**
TOOLS FOR NANOTECH



HITACHI
Inspire the Next



Organized by the Consultant Laboratory for Rapid Diagnostic EM in Infectious Diseases at the Robert Koch-Institute (RKI) and the Arbeitskreis EM-Erregerdiagnostik der Deutschen Gesellschaft für Elektronenmikroskopie (Working Group for EM-Pathogen Diagnosis of the German Society for Electron Microscopy) this years "Glienicke-Workshop" will be held again in the lecture hall of the RKI.

The biennial Workshop will address recent progress in EM diagnostics and related fields as well as methodological advances. In the focus of the first meeting day are EM studies of new or emerging viruses, case reports and the progress in methodologies, including information from companies concerning new technical developments in the field of microscopy. The second day will consist of basic research and EM technics to study pathogen structure and its interaction with the cell at a high resolution.

Regular presentations will be allotted 15 minutes plus 5 minutes for discussion and a number of plenary lectures (30 min.) will provide overviews of selected topics. The presentation of posters is encouraged.

As the meeting is intended to provide a communication platform to promote networking activities, a congress dinner and a guided tour in a museum at the "Museumsinsel" in Berlin will complement the scientific program.

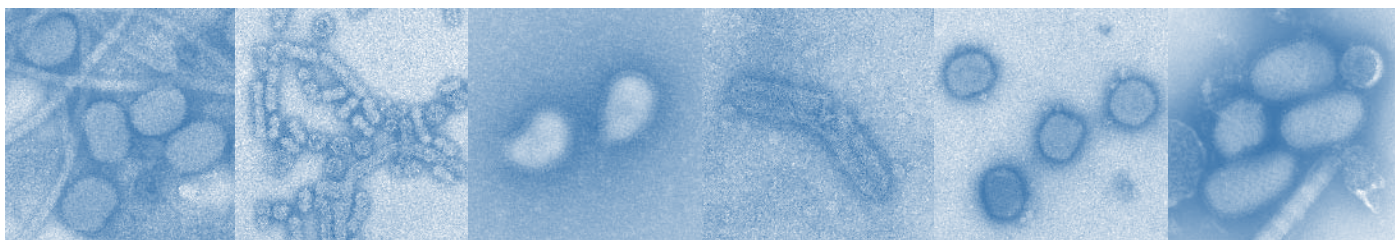
For those who arrive in Berlin on Wednesday afternoon, we offer a demonstration of tomography software (OSIS) and a joint dinner (not included in the registration fee) at 7 p.m. in a nearby restaurant (see registration form).

Yours,

Norbert Bannert
Bärbel Hauröder
Michael Laue

Registration fee € 50 (payable on the first meeting day)
Dinner on 6th Nov. (included in the registration fee)
Museum € 10 - 20

For registration please use the attached form.



Draft Program Glienicke-Workshop 2008

Thursday, November 06, 2008

09.00-10.00 Registration

10.00-10.10 Welcome Address (RKI President/Head ZBS)

10.10-10.20 Opening Remarks (Norbert Bannert)

Chair: Hans Gelderblom

10.20-10.50 Plenary Lecture I: : Atanu Basu, NIV, Pune, India
Electron microscopy of Chikungunya virus

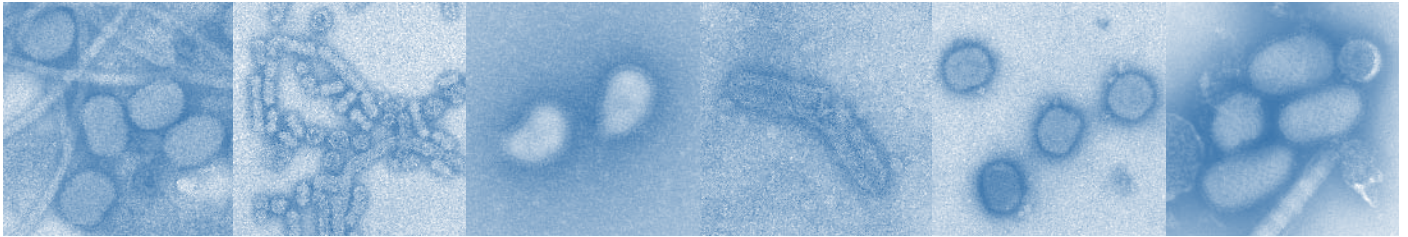
10.50-11.20 Plenary Lecture II: Alan Curry, HPA, Manchester, UK
EM detection of opportunistic parasitic infections in (mainly) AIDS patients – the Manchester, UK, experience

11.20-11.40 Antonio Lavazza, IZS LER, Brescia, Italy
Electron microscopy detection of viral agents In diarrhetic pigs during the period 2002-2007 in Northern Italy

11.40-12.00 Yossi Manor, Sheba Medical Centre, Tel-Hashomer, Israel
EM as a complementary rapid viral diagnostic tool in the environment of bimolecular diagnostic methods

12.00-12.20 Christina Johnsen, SSI, Copenhagen, Denmark
Transmission electron microscopy at Statens Serum Institute in Denmark 2007-2008; applications in research, diagnostics, product development and quality control

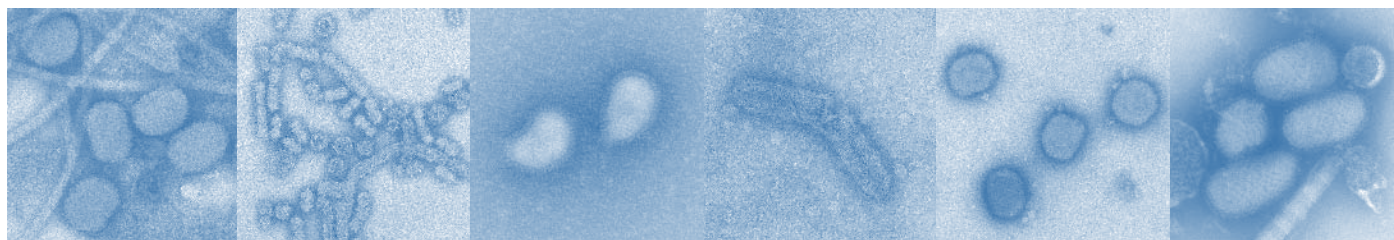
12.20-13.20 Lunch break



Thursday, November 06, 2008

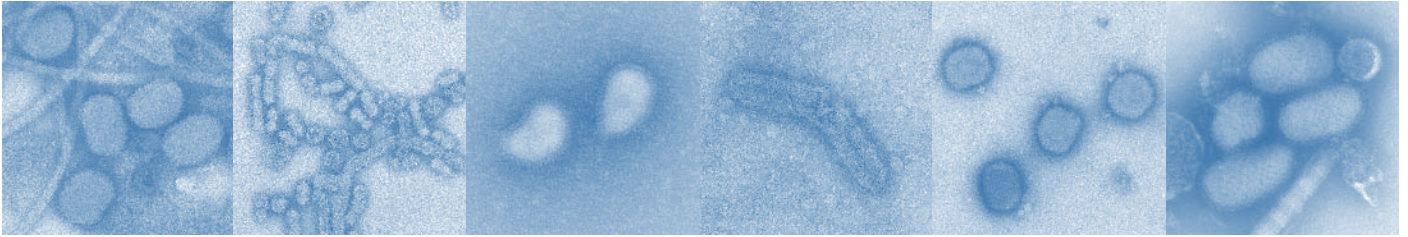
Chair: Bärbel Hauröder

- 13.20-13.50 Plenary Lecture III: Charles Humphrey, CDC, Atlanta, USA
Quality assessment of viruses and virus-like particles by negative stain transmission electron microscopy
- 13.50-14.20 Plenary Lecture IV: Hans Gelderblom, RKI, Germany
Dos and do 'nts in diagnostic EM in infectious diseases. My swans song
- 14.20-14.40 Hazel Appleton, HPA, Porton Down, UK
The contribution of electron microscopy in the characterisation and identification of bacterial and viral pathogens at CFI
- 14.40-15.00 Coffee break
- 15.00-15.20 Roland Fleck, NIBSC, Hertfordshire, UK
Novel approaches at NIBSC to the study of virus particles and replication
- 15.20-15.40 Susanne Richter, AGES, Mödling, Austria
Poxvirus assembly - Case reports on orthopox and avipox
- 15.40-16.00 Giusy Cardeti, IZS LT, Rome, Italy
Diagnosis of parvovirus gastroenteritis in dogs and cats by immuno-electron microscopy and immunoprecipitation test
- 16.00-16.20 Josef Schröder, Univ. Regensburg, Regensburg, Germany
Virus infection in a transplanted infant liver - a case report
- 16.20-16.40 Michael Laue, RKI, Berlin, Germany
Preparation and diagnosis - Some facts and ideas
- 16.40-17.00 Coffee break



Thursday, November 06, 2008

- 17.00-17.20 Anke Dutschke, Zeiss, Oberkochen, Germany
"will be provided"
- 17.20-17.40 Wim Busing, FEI, Eindhoven, The Netherlands
Novel microscopy techniques in viral research
- 17.40-18.00 Matthias Rodewald, JEOL, Eching, Germany
New development in biological electron microscopy from JEOL
- 18.00-18.20 Robert Steffen, Hitachi High-Technologies, Krefeld, Germany
"will be provided"
- 18.20-18.40 Martin Bartels, Olympus Soft Imaging Solutions, Münster, Germany
EM-Lab: Automation for imaging and analysis
- 18.40 End of the first day
- 20.00 Dinner



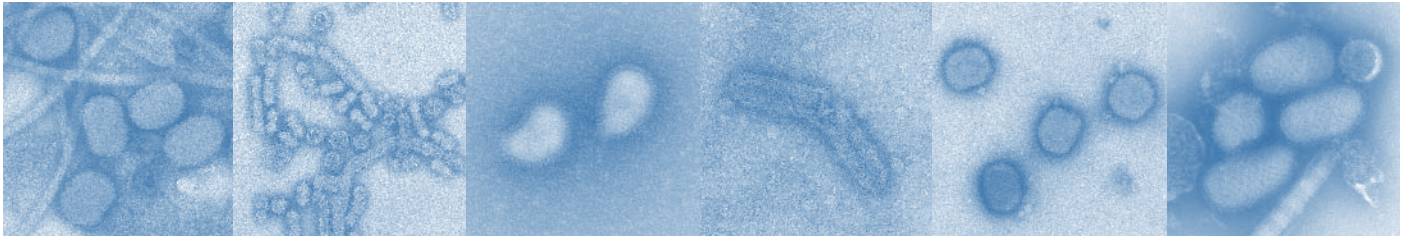
Friday, November 07, 2008

Chair: Michael Laue

- 9.00-9.30 Plenary Lecture V: Montserrat Barcena, Univ. Leiden, The Netherlands
"Pleomorphic viruses by cryo tomography: the structure of coronaviruses"
- 9.30-10.00 Plenary Lecture VI: Kolesnikova, Univ. Marburg, Marburg, Germany
Budding of Marburg virus
- 10.00-10.20 Christel Schmetz, BNI, Hamburg, Germany
Rapid diagnosis of marburg hemorrhagic fever
- 10.20-10.40 Coffee break

Chair: Josef Schröder

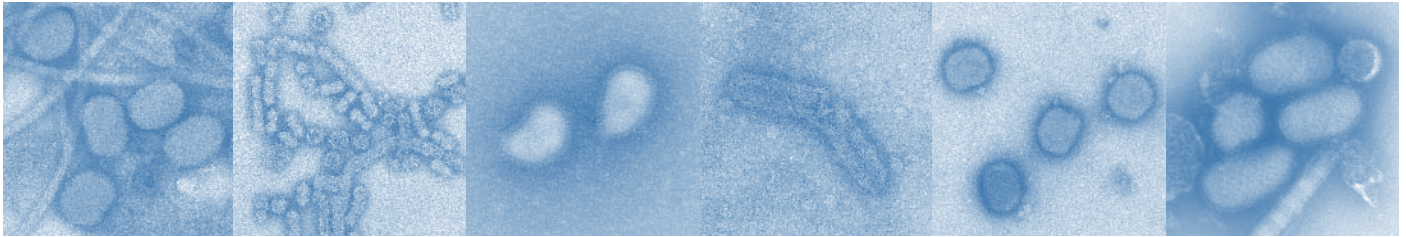
- 10.40-11.00 Norbert Bannert, RKI, Berlin, Germany
Assembly and morphology of human endogenous retrovirus-K / EQA-21
- 11.00-11.20 Stefanie Deike, Univ. Giessen, Giessen, Germany
Immunogoldlabeling of cryosections - Exploring the Tokuyasu technique
- 11.20-11.40 Andreas Kurth, RKI, Berlin, Germany
Detection of novel viruses in German bats
- 11.40-12.00 Atanu Basu, NIV, Pune, India
Imaging the interaction between dengue and human platelets using AFM and TEM
- 12.00-13.00 Lunch break



Friday, November 07, 2008

Chair: Norbert Bannert

- 13.00-13.30 Plenary Lecture VII: Paul Walther, Univ. Ulm, Ulm, Germany
Egress of cytomegalovirus visualized by electron microscopy using high-pressure freezing and STEM tomography
- 13.30-14.00 Plenary Lecture VIII: Reinhard Rachel, Univ. Regensburg, Regensburg, Germany
Ignicoccus hospitalis and Nanoarchaeum equitans: ultrastructure, cell-cell interaction, and 3D reconstruction from serial sections of freeze-substituted cells and by electron cryotomography
- 14.00-14.20 Jan Mast, CODA-CERVA, Ukkel, Belgium
"will be provided"
- 14.20-14.40 Barry Dowsett, HPA, Porton Down, UK
Hunting for bio-weapons on the macro scale
- 14.40-14.45 Concluding Remarks (Organizers)
- 14.45 End of the Workshop
- 16.30 Suggestion: Social Event (Alte Nationalgalerie [Museumsinsel], Guided Tour/Dinner)



Hotels near RKI

Gästehaus Axel Springer
Föhrrer Str. 14
13353 Berlin
Tel.:++49(0) 030 / 45 00 60 Fax:++49(0)30 45006146
E-mail: gaestehaus@dhzb.de
<http://www.dhzb.de/metapages/startpage/>
Single Room: € 80,00 Double Room: € 110,00
Very close to the Institute

Ibis Berlin Reinickendorf
Alt-Reinickendorf 4-5
13407 Berlin
Tel.:++49 (0)30 / 49 88 30
http://www.ibishotel.com/ibis/fichehotel/gb/ibi/1573/fiche_hotel.shtml
Single Room: € 69,00

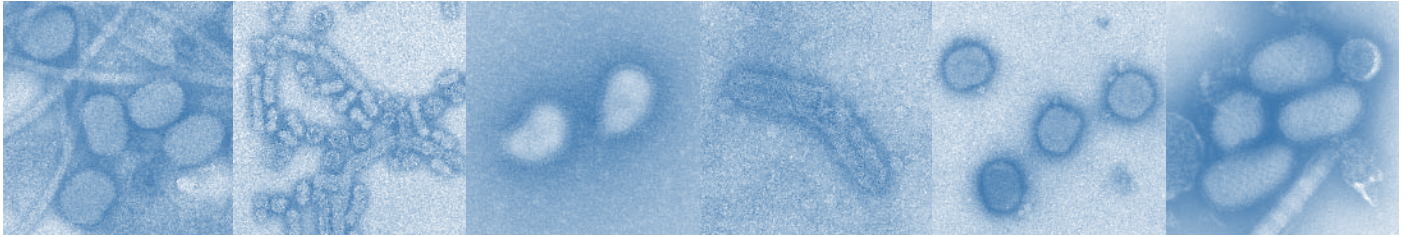
Hotel Holiday Inn Berlin-Mitte
Hochstr. 2-3
13357 Berlin-Mitte,
++49 (0)30 4600 30
<http://www.hiberlin.de/en/startseite.html>
Email: info@hiberlin.de

Hotelpension Rehberge
Ofener Str. 15
13349 Berlin
Tel.:++49 (0) 30 / 45 20 873 Fax ++49 (0)30 45 19 94 65
<http://www.hotelpension-rehberge.de/>
E-mail: info@hotelpension-rehberge.de

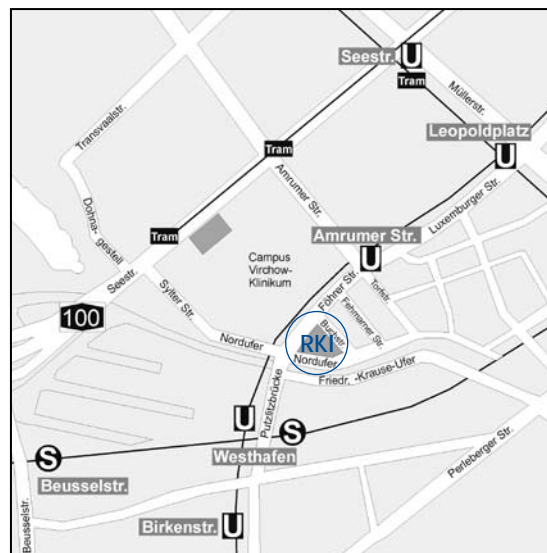
Arcos Hotel and Appartments
Genter Str. 53 A/B
13353 Berlin
Tel.:++49 (0) 30 / 45 48 64 54 Fax ++49 (0) 30 / 45 48 61 23
<http://www.arcos-berlin.de/index.php>
E-mail: arcos@arcos-berlin.de

Hotel Hansablick
Flotowstr. 6
10555 Berlin-Tiergarten
Tel: ++49(0)30-39 04 80-0 Fax++49 (0)30-392 69 37
<http://www.hansablick.de/>
E-mail: reserv@hotel-hansablick.de

For more information regarding an accomodation, please contact Lars Möller at
MoellerL@rki.de



How to reach the RKI



Meeting Location:
Lecture Hall of the Robert Koch-Institut
Nordufer 20
13353 Berlin
Germany
Phone: +49-30-4547-2549

For more information contact Lars Möller at
MoellerL@rki.de

Glienicke Workshop 2008
Diagnostic Electron Microscopy in Infectious Diseases
Robert Koch Institute, Berlin, November 6-7, 2008

Registration Form

Please print or type attendee information

Last Name/Surname

First Name, Middle Initial

Degree

Department

Institute

City

Zip or Postal Code

Country

E-mail

Phone

Fax

Registration: €50

It covers:

Coffee breaks, Dinner on Thursday, Nov. 6th,

Registration does not include:

Transportation, Accommodation,
Breakfast and Lunch
National Gallery (~ €15)
Dinner on Wednesday

Demo Tomography Software (Wednesday 16:00-18:00)

Yes, I will participate

Dinner on Wednesday (19:00)

Yes, I will participate

Poster contribution

Yes

Dinner on Thursday

Yes, I will participate

National Gallery (Friday, 16.30-18.00, Guided Tour)

Yes, I will participate

Deadline for registration: October 20th, 2008. Please register early.

Send this form by mail or fax to:

Dr. Norbert Bannert, Robert Koch-Institute, ZBS 4, Nordufer 20, 13353 Berlin, Germany

Fax: +49-30-4547-2334, Tel.:+49-30-4547-2549, E-mail: BannertN@rki.de